
VODIČ ZA OSOBE S INVALIDITETOM KROZ KRAPINSKO-ZAGORSKU ŽUPANIJU

GUIDE THROUGH THE DISTRICT
KRAPINSKO-ZAGORSKA FOR DISABLED

FÜHRER DURCH GESPANSCHAFT
«KRAPINSKO-ZAGORSKA» FÜR BEHINDERTE



ZNAČENJE PIKTOGRAMA

- EXPLANATION OF SYMBOLS – ERLÄUTERUNG DER PIKTOGRAMME –



- **PRISTUPAČAN OBJEKT**
 - FULLY ACCESSIBLE
 - ZUGÄNGLICH
-



- **DJELIMIČNO PRISTUPAČAN OBJEKT**
 - RESTRICTED ACCESSIBILITY
 - EINGESCHRÄNKT ZUGÄNGLICH
-



- **NEPRISTUPAČAN OBJEKT**
 - NOT ACCESSIBLE
 - NICHT ZUGÄNGLICH
-



- **REZERVIRANO PARKIRALIŠNO MJESTO**
 - PARKING FOR DISABLED
 - BEHINDERTEPARKPLÄTZE
-



- **PARKIRALIŠTE**
 - PARKING
 - PARKPLÄTZE
-



- **Ulaz u razini ili prag visine do 3 cm**
 - Access without step or threshold up to 3 cms
 - Eingang stufenlos oder Schwelle bis 3 cm
-



- **Jedna stepenica**
 - One step
 - Eine Stufe
-



- **Više od jedne stepenice**
 - More than one step
 - Mehr als eine Stufe
-



- **Kosina nagiba do 5%**
 - Ramp with a gradient of up to 5%
 - Rampe bis 5%
-



- **Kosina nagiba preko 5%**
 - Ramp with gradient of more than 5%
 - Rampe über 5%
-



- **Širina vrata najmanje 80 cm**
 - Doors with a width of at least 80 cms
 - Türbreite mindestens 80 cm
-



- **Širina vrata između 65 i 80 cm**
 - Doors with a width of between 65 and 80 cms
 - Türbreiten zwischen 65 und 80 cm
-

ZNAČENJE PIKTOGRAMA

- EXPLANATION OF SYMBOLS – ERLÄUTERUNG DER PIKTOGRAMME –



- Dizalo - širina vrata najmanje 80 cm, dubina najmanje 140 cm
- Lifts - width of doors is at least 80 cms, lifts is at least 140 cms deep
- Lift - Türbreiten mindestens 80 cm, Tiefe mindestens 140 cm



- Dizalo - širina vrata najmanje 65 cm, dubina najmanje 90 cm
- Lifts - width of doors is at least 65 cms, lifts is at least 90 cms deep
- Lift - Türbreiten mindestens 65 cm, Tiefe mindestens 90 cm



- POKRETNNA PLATFORMA
- STAIR'S LIFT
- TREPPENLIFT



- TELEFON DOSTUPAN OSOBAMA S INVALIDITETOM
- ADAPTED PUBLIC TELEPHONE BOOTHS
- ROLLSTUHLGERECHTE TELEFONZELLEN

- Visina aparata 100 cm
- Height of the phone is 100 cms
- Telefonhöhe 100 cm



- POSTOJI TELEFON
- PUBLIC TELEPHONE BOOTHS
- TELEFONZELLEN



- PRILAGOĐEN WC
- WC FOR WHEELCHAIR USERS
- WC FÜR ROLLSTUHLFAHRER
- Vrata širine 80 cm
- Width of door is 80 cms
- Türbreiten mindestens 80 cm
- Prostor najmanje širine 190 x 190 cm
- Area of toilet is at least 190 x 190 cms
- Fläche mindestens 190 x 190 cm



- WC KOJEG OSOBE S INVALIDITETOM MOGU KORISTITI
- PUBLIC TOILET
- ÖFFENTLICHE WC-ANLAGE

Pozivni broj za Krapinsko-zagorsku županiju je **049**.

- 112 POZIV ZA ŽURNO SPAŠAVANJE I UZBUNJIVANJE
- 92 POLICIJA
- 93 VATROGASCI
- 94 HITNA POMOĆ
- 987 POMOĆ NA CESTI-HAK



**OPĆINA
GORNJA STUBICA**

ZDRAVSTVENE USTANOVE
PUBLIC MEDICAL CENTER – GESUNDHEIHSÄMTER



ZDRAVSTVENA AMBULANTA
Trg sv. Jurja 21, tel. 289 171



LJEKARNE
PHARMACIES – APOTHEKEN



LJEKARNA
Trg Sv. Jurja 10, tel. 290 900



OBRAZOVNE USTANOVE
EDUCATION INSTITUTIONS – BILDUNGSANSTALTEN



OSNOVNA ŠKOLA MATIJE GUPCA
Matije Gupca 2, tel. 289 541



KULTURA
CULTURE – KULTUR



MUZEJ SELJAČKIH BUNA
DVORAC OBITELJI ORŠIĆ
Samci 64, tel. 587 880



ŽUPNA CRKVA SV. JURAJ MUČENIK
ŽUPNI URED
Zagrebačka 6, tel. 289 094



UPRAVA I UREDI

LOCAL BOARDS AND OFFICES - GEMEINDEANSTALTEN UND ÄMTER



OPĆINA GORNJA STUBICA
Trg Sv. Jurja 2, tel. 290 915



KRAPINSKO ZAGORSKA ŽUPANIJA, URED ZA
OPĆU UPRAVU, ISPOSTAVA DONJA STUBICA,
MATIČNI URED GORNJA STUBICA
Trg Sv. Jurja 21, tel. 289 281



UGOSTITELJSTVO

CATERING – HOTELGEWERBE



RESTORAN «GROF»
Ul. Grofova Oršić 17, tel. 290 111



RESTORAN «PUNTAR»
Trg Sv. Jurja 12, tel. 289 286



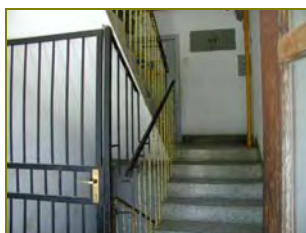
«BERTIJA POD LIPOM»
Zagrebačka 8, tel. 289 160



«LOJZEKOVA HIŽA», SEOSKI TURIZAM
Gusakovec 116, tel. 469 325



POŠTA
POST OFFICE – POSTAMT



HRVATSKA POŠTA
Trg Sv. Jurja 4, tel. 289 279



PROMET
TRANSPORT – TRANSPORT



ŽELJEZNIČKA POSTAJA
Matije Gupca bb



OBILJEŽENA PARKIRALIŠNA MJESTA ZA VOZILA OSOBA S INVALIDITETOM
PARKING FOR DISABLED – BEHINDERTEPARKPLÄTZE

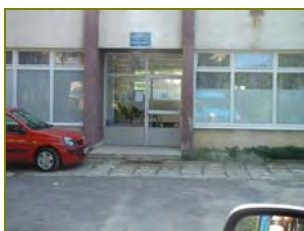


- ispred poglavarstva	1
- ispred prodavaonice «Trgostila»	1



**OPĆINA
HRAŠČINA**

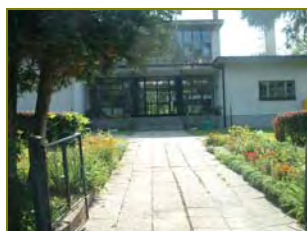
ZDRAVSTVENE USTANOVE
PUBLIC MEDICAL CENTER – GESUNDHEIHSÄMTER



ZDRAVSTVENA AMBULANTA
Trgovišće 24, tel. 459 442



OBRAZOVNE USTANOVE
EDUCATION INSTITUTIONS – BILDUNGSANSTALTEN



OSNOVNA ŠKOLA „VLADIMIR NAZOR“,
BUDINŠČINA PODRUČNA ŠKOLA HRAŠČINA,
tel. 459 397



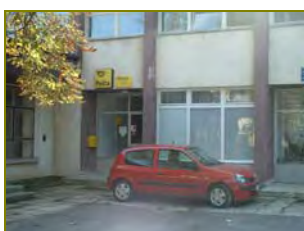
KULTURA
CULTURE – KULTUR



ŽUPNA CRKVA SV. NIKOLE
ŽUPNI ZRED, tel. 459 400



POŠTA
POST OFFICE – POSTAMT



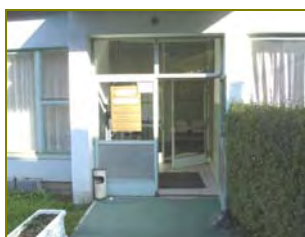
HRVATSKE POŠTE
Trgovišće bb, tel. 459 388





**OPĆINA
HUM NA SUTLI**

ZDRAVSTVENE USTANOVE
PUBLIC MEDICAL CENTER – GESUNDHEIHSÄMTER



ZDRAVSTVENA AMBULANTA
Hum na Sutli bb, tel. 341 158



LJEKARNE - PHARMACIES – APOTHEKEN



LJEKARNA HUM NA SUTLI
Hum na Sutli bb, tel. 341 049



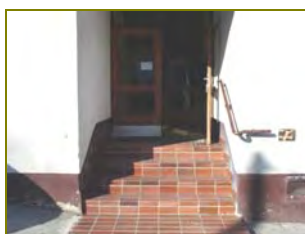
OBRAZOVNE USTANOVE
EDUCATION INSTITUTIONS – BILDUNGSANSTALTEN



OSNOVNA ŠKOLA „VIKTORA KOVAČIĆA“
Hum na Sutli 152, tel. 341 255



UPRAVA I UREDI
LOCAL BOARDS AND OFFICES - GEMEINDEANSTALTEN UND ÄMTER



URED DRŽAVNE UPRAVE KRAPINSKO-
ZAGORSKE ŽUPANIJE
Hum na Sutli, tel. 340 666



POŠTA - POST OFFICE – POSTAMT



HRVATSKE POŠTE
Hum na Sutli 158, tel. 341 165



OBILJEŽENA PARKIRALIŠNA MJESTA ZA VOZILA OSOBA S INVALIDITETOM
PARKING FOR DISABLED – BEHINDERTEPARKPLÄTZE

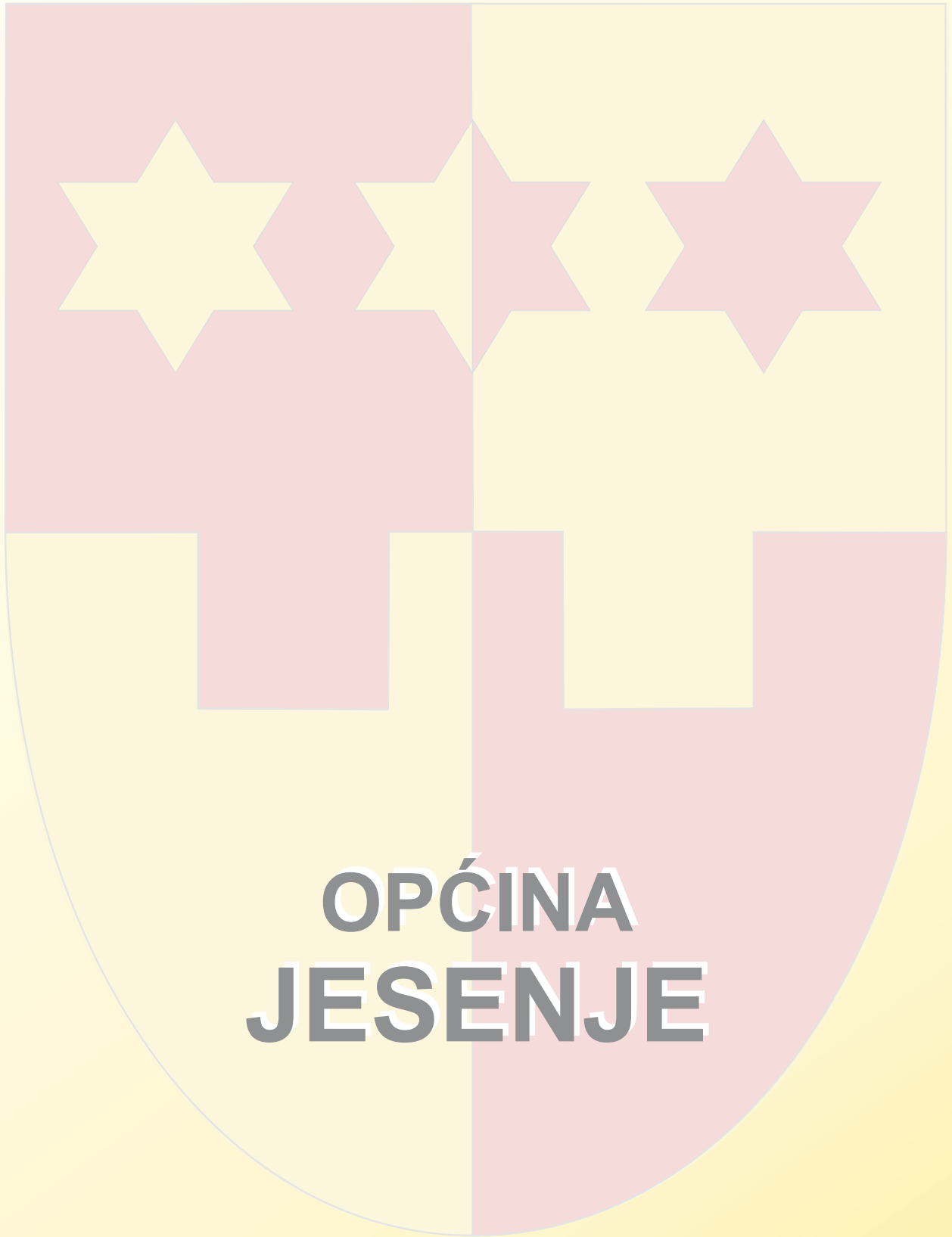


- D-206 s desne strane

2

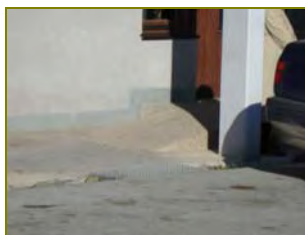
- na cesti prem Dječjem vrtiću

2



**OPĆINA
JESENJE**

ZDRAVSTVENE USTANOVE
PUBLIC MEDICAL CENTER – GESUNDHEIHSÄMTER



ZDRAVSTVENA AMBULANTA
Gornje Jesenje 103, tel. 300 693



OBRAZOVNE USTANOVE
EDUCATION INSTITUTIONS – BILDUNGSANSTALTEN



OSNOVNA ŠKOLA GORNJE JESENJE
Gornje Jesenje, tel. 375 012



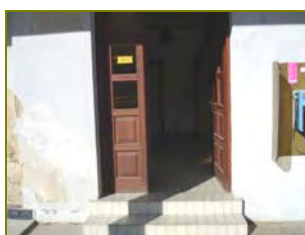
KULTURA
CULTURE – KULTUR



ŽUPNA CRKVA SVETOG IVANA KRSTITELJA
Gornje Jesenje 68, tel. 357 009



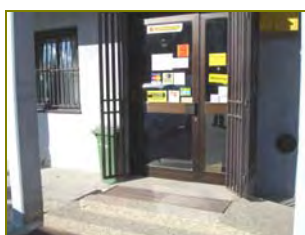
UPRAVA I UREDI
LOCAL BOARDS AND OFFICES - GEMEINDEANSTALTEN UND ÄMTER



OPĆINA JESENJE, POGLAVARSTVO,
GRADSKO VIJEĆE
Gornje Jesenje 103, tel.



POŠTA
POST OFFICE – POSTAMT



HRVATSKE POŠTE
Gornje Jesenje 103, tel. 375 100

